

Tug Fenders

KEYHOLE FENDER (HKF)



Where
Innovation
is Tradition



KEYHOLE FENDER (HKF)

Block and cube fenders have a traditional 'keyhole' profile which is strong and ideal for heavy-duty applications.

There is a choice of grooved or flat face fenders depending on the required friction levels.

Where very low friction is needed, block and cube fenders can also be made as composite fenders with integral UHMW-PE faces. This is useful for tugs that operate in.

FEATURES

- Extreme-Duty Design
- Twin-Leg Attachment
- Open Bore for Easy Installation
- Grooved for Extra Grip
- Fits around Tight Bends

APPLICATIONS

- All Types of Tugs
- Ocean-Going Tugs
- Icebreakers
- Large Harbour Tugs
- Bridge and Pile Protection

KEYHOLE FENDER (HKF)

DIMENSIONS

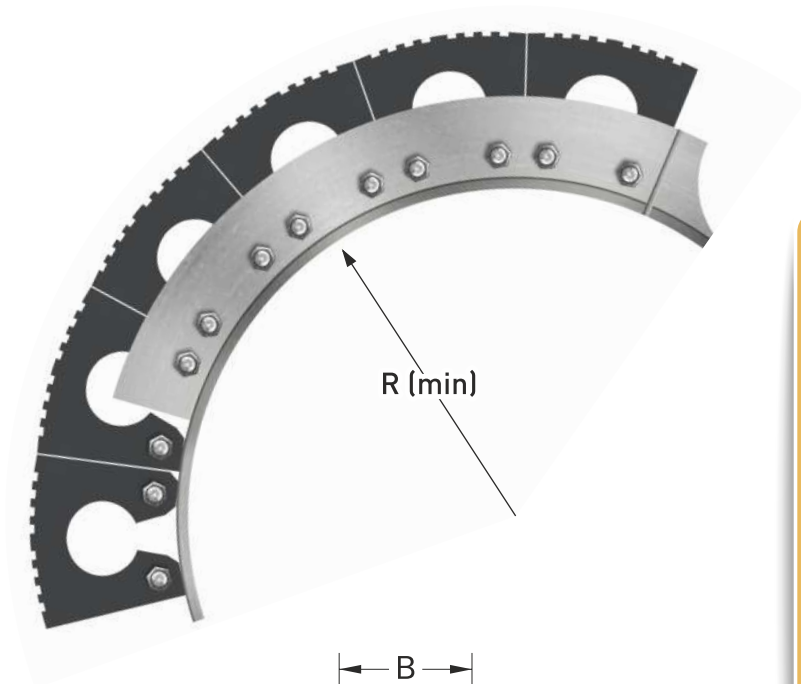
A	B	C	ØD	E	ØG	L _{max}	WEIGHT
200	280	180	100	67	50	2900	51
250	350	220	110	75	55	2000	81
300	426	269	135	90	65	3000	120
350	420	255	90	100	75	2000	180

[Units: mm, kg/m]

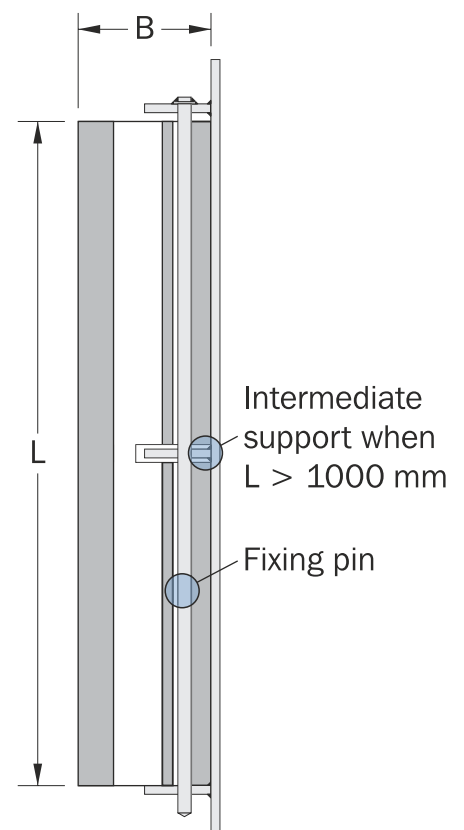
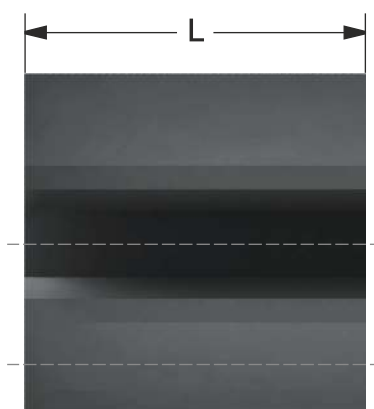
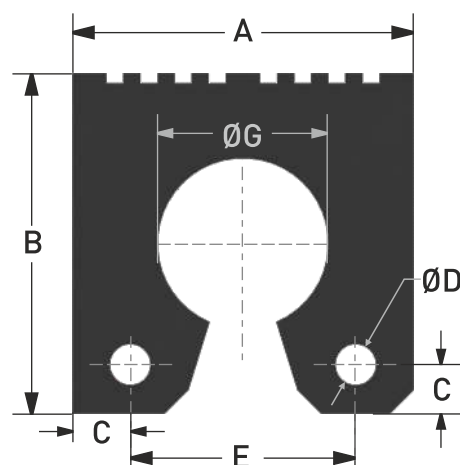
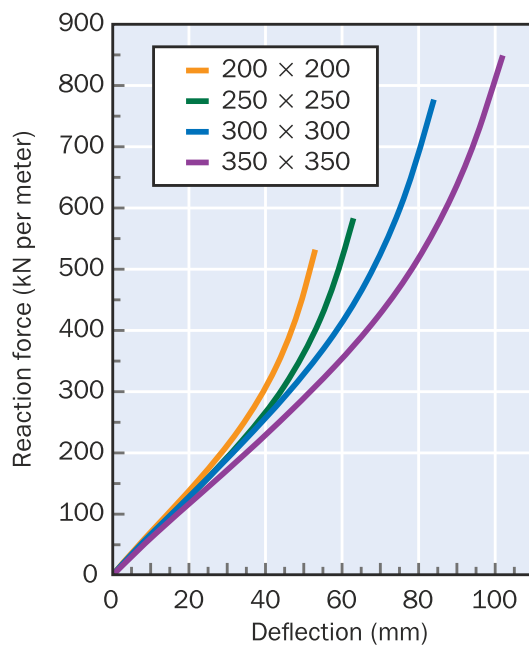
FIXING

PIN	FLAT BAR	R _{min}
Ø25	100 x 15	450
Ø30	125 x 20	600
Ø30	150 x 20	800
Ø30	175 x 20	1000

[Units: mm]



PERFORMANCE GRAPH





HI-TECH ELASTOMERS LTD.

WHERE INNOVATION IS A TRADITION

OFFICE

227, Hitech Elastomers, Santej-Vadsar Road,
Gandhinagar, Gujarat, INDIA - 384004.

Phone : +91-9824 654 671

Email : vpsales@hitechelastomers.com
sales1@hitechelastomers.com
sales@hitechelastomers.com

MANUFACTURING PLANT I:

798, Sola-Kalol Highway, Rakanpur,
Dist.: Gandhinagar, Gujarat, INDIA - 384002.

MANUFACTURING PLANT II:

227, Santej-Vadsar Road, Santej,
Dist. Gandhinagar, Gujarat, INDIA - 384004.

www.hitechelastomers.com